



Share  
Network

# SHARE SIRA PILOT ACTIONS



ΑΝΑΠΤΥΞΙΑΚΗ ΚΑΡΔΙΤΣΑΣ ΑΝΑΠΤΥΞΙΑΚΗ  
ΑΝΩΝΥΜΗ ΕΤΑΙΡΙΑ Ο.Τ.Α. ΑΝ.ΚΑ Α.Ε.



Co-funded by the European Union's  
Asylum, Migration and Integration Fund

[www.share-network.eu](http://www.share-network.eu)

# Share SIRA

Region of Bourgogne-Franche-Comté  
(Saône-et-Loire department)

Region of Nouvelle Aquitaine  
(Corrèze department)

Autonomous Region of Castilla y León  
(Soria province)

Autonomous Region of Castilla la Mancha  
(Guadalajara province)

Autonomous Region of Aragón  
(Teruel province)

Region of Provence-Alpes Côte d'Azur  
(Vaucluse department)

Region of Auvergne Rhône-Alpes  
(Isère department)

Province of Lower Silesia

Province of Mazovia

Region of Thessaly  
(Karditsa regional unit)

Logos and QR codes for: Institut DON BOSCO, HUMANITY, FUNDACJA UKRAINA, la ligue de l'enseignement FDL de l'Isère, AU MAQUIS! Terrains d'éducation populaire, PSICARA PSICOLOGIA, Cruz Roja, edu nowa laboratorium innowacji i rozwoju.



Co-funded by the European Union's  
Asylum, Migration and Integration Fund

# Coordination of a network of rural groups

Ligue de l'Enseignement



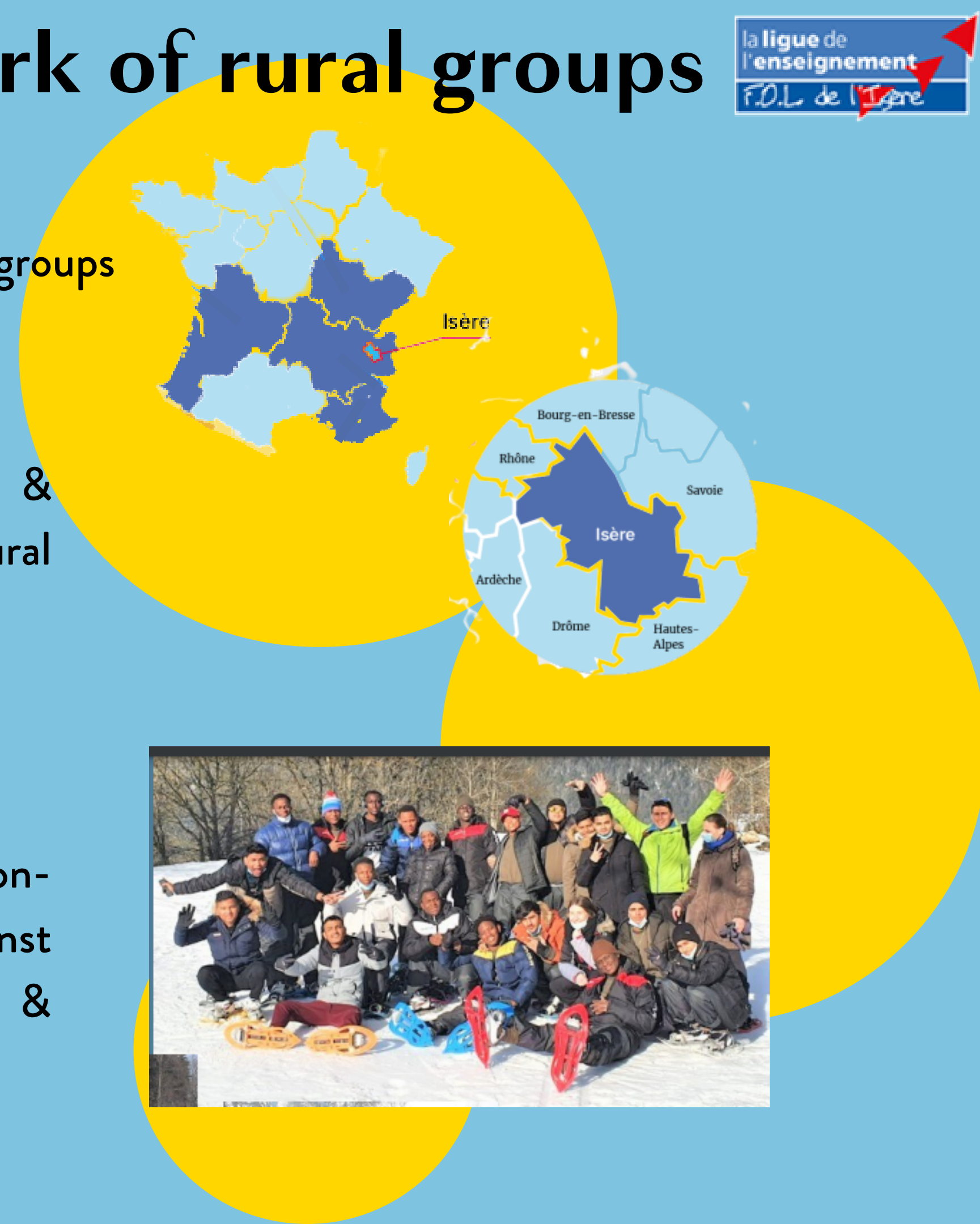
# Coordination of a network of rural groups

Where? Isère, France

Topic: Coordination & building capacities of volunteer groups

Target Group: Volunteer groups & newcomers

- Activities:
- Training sessions on asylum law; migrant & refugee rights; access to health ; intercultural values; language teaching; mobility
  - Outdoor awareness-raising weekend
  - Series of events on: hospitality; non-discrimination & fighting prejudices against migrants; inclusion through language & sport/culture



# Coordination of a network of rural groups

## Lessons Learned & Achievements

- Adapt to the time and skills of volunteers
- Collaborate with professional structures to act as mediators
- Co-create the activities with newcomers & build horizontal relationships with beneficiaries
- Work with expert organisations to build capacities on participation
- Centralizing activities (eg. trainings) in one location instead of duplicating efforts is cost-efficient



# Collective farm cultivates solidarity

## Au maquis



Co-funded by the European Union's  
Asylum, Migration and Integration Fund

# Collective farm cultivates solidarity

Where?

Vaucluse, France

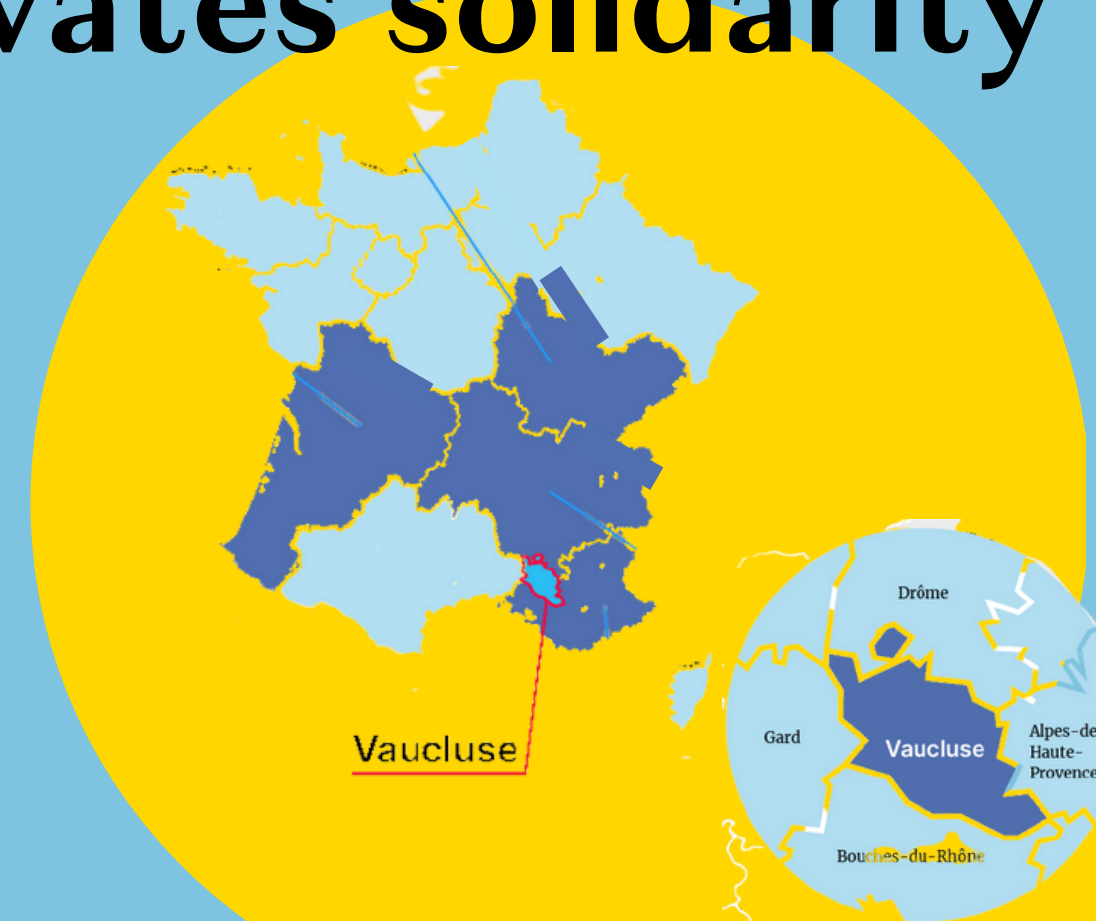
Topic:

Collective farm project

Target Group: Newcomers & local community

Activities:

- Gardening workshops
- Farming activities in Lauris
- Distributions of vegetables
- Visits to the city of Cavailon
- One-week co-design workshop
- Volunteer group for: language learning; legal and administrative support; socio-cultural activities; theatre; and accommodation



Co-funded by the European Union's  
Asylum, Migration and Integration Fund

# Collective farm cultivates solidarity

## Lessons Learned & Achievements

- Migrants & refugees were actively involved in the farm's activities & decisions
- It became crucial to mobilize local community & create a volunteer support group to provide comprehensive support (legal, language classes, etc)





# Make a Wish

## Humanity.



*Make a Wish*

**EXPOSITION**  
"PEINTURE DE PAYSAGES"  
Par l'artiste peintre Eugène JANKO

**Anwar**  
Photographie

**Adama**  
Couture

**Kadiatou**  
Guitare

**Sherif**

**Comptabilité**  
**Viktoryia**

**Cricket**  
**Humayun**

**Yuheni**  
Permaculture

**Said**  
**Omidkhan**



Co-funded by the European Union's  
Asylum, Migration and Integration Fund



# Make a Wish



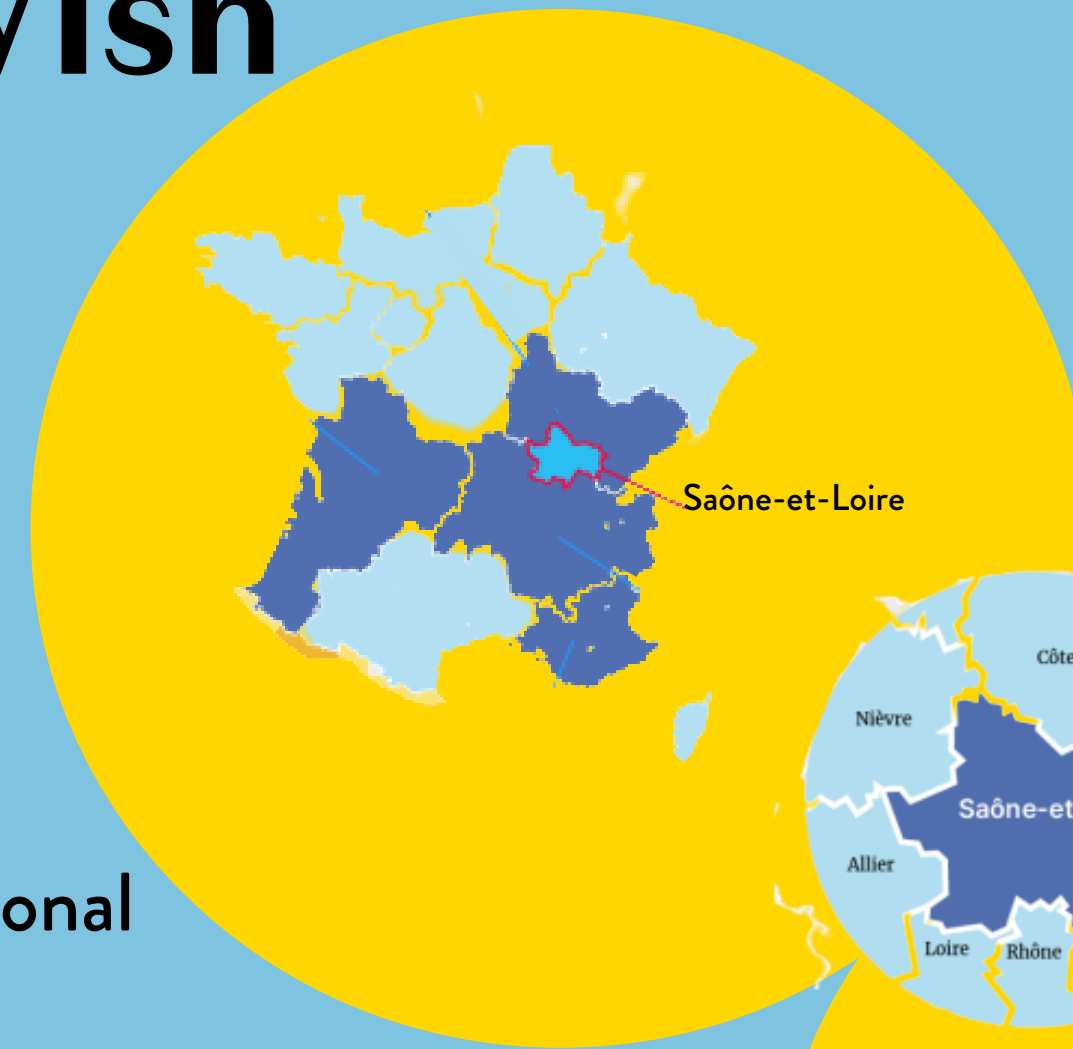
Where? Saône-et-Loire, France

Topic: Project incubator

Target Group: Refugees

Activities: Supported refugees in fulfilling own projects:

- Painting & photo exhibitions
- Guitar courses & meetings with professional musicians
- Sewing courses & exhibition of traditional clothes
- Permaculture training with local volunteer
- Accounting training
- Launch of cricket team
- Preparation of traditional meals for 'Living Together' events



Co-funded by the European Union's  
Asylum, Migration and Integration Fund

# Make a Wish



## Lessons Learned & Achievements

- Participation takes time & dedicated resources
- It is essential to adapt to the beneficiaries aspirations, needs and timing
- A good practice is to appoint a reference person
- Participatory approaches require a change in the mindset within the organisation (flexility, willingness to embrace change)
- Find a balance between welcoming, supporting and adapting to the person's possibilities while linking them with the resources of the territory.



# P.A.C.S

## (Sponsors of Access to Culture & Sport)

### Institut Don Bosco



## UN PARRAIN POUR DEMAIN



# P.A.C.S

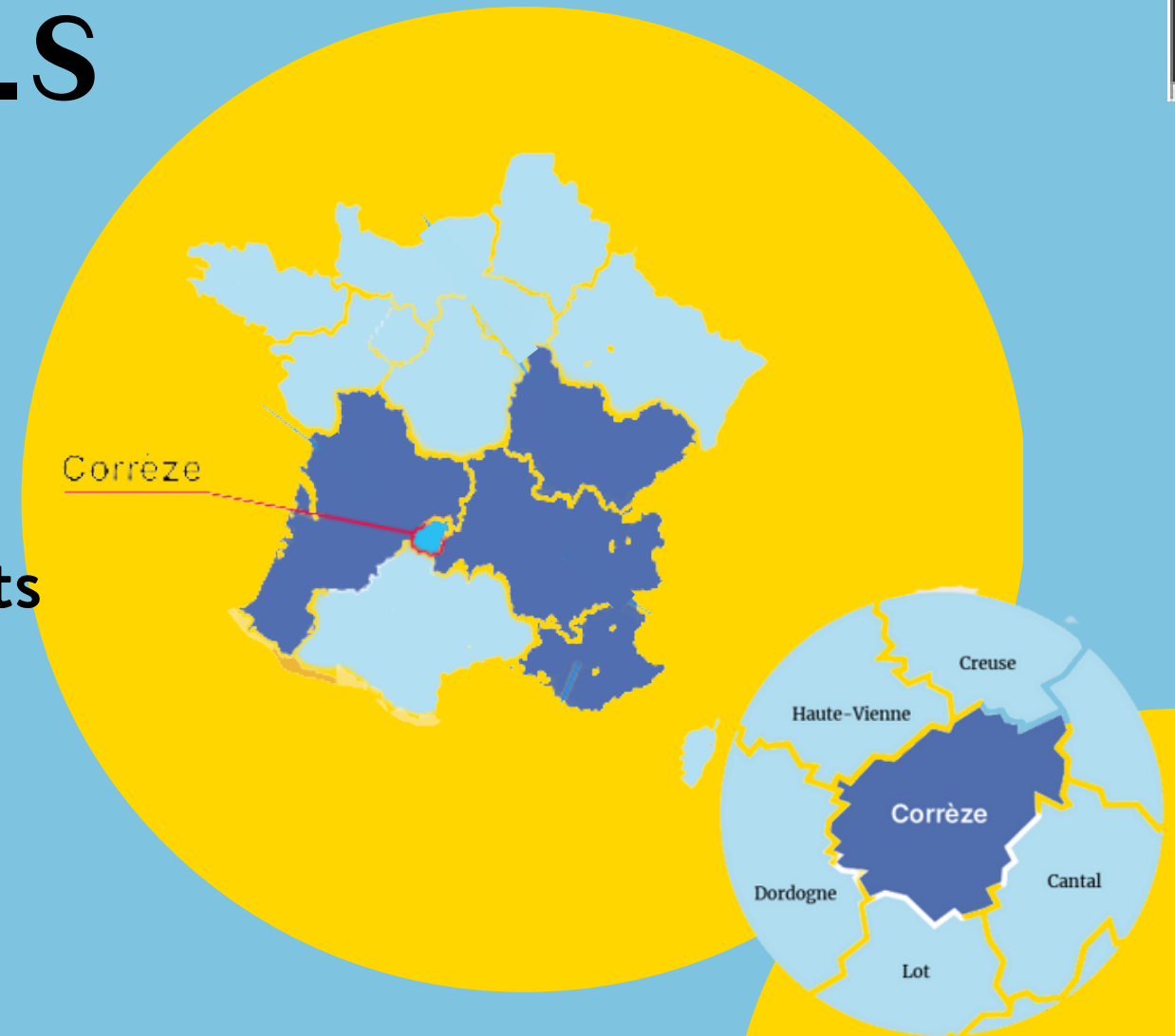
Where? Corrèze, France

Topic: Mentorship scheme

Target Group: Unaccompanied minors/young isolated migrants

## Activities:

- Outreach & identification of mentors
- Building the capacities of mentors
- Support to mentors-mentorees in organising activities at early stages (dinners, sports, events, etc)
- Mediation in case of issues



## Lessons Learned & Achievements

- Mentorship schemes allow for the creation of long-lasting social & intergenerational relations
- The identification of mentors enabled to raise awareness of the needs of unaccompanied minors & to establish new partnerships
- Although not foreseen, it was key to recruit dedicated staff to support the activities



**SOCIAL** ■ Grâce à une nouvelle opération lancée par l'institut Don Bosco

## Parrainer des jeunes mineurs

L'institut Don Bosco, plateforme d'accueil de mineurs non accompagnés implantée à Tulle, lance un projet de parrainage pour favoriser l'inclusion sociale de ces jeunes au sein du territoire corrézien.

Vincent Faure

**C**réer du lien. Et développer par ce même lien l'intégration de ces jeunes venus de loin pour la plupart d'entre eux. L'institut Don Bosco est une association œuvrant à l'accueil des mineurs non accompagnés sur le département de la Corrèze. Implantée à Tulle depuis 2019, elle reçoit environ une quarantaine de jeunes chaque année. « Ils proviennent pour la majorité d'Afrique noire et du Moyen-Orient », précise le directeur de l'association, Nicolas Vignard.

### S'intégrer par le sport et la culture

Parmi les quelque 60 mineurs répartis en logements diffus entre Brive et Tulle, la plupart proviennent du Bangladesh, du Pakistan, du Mali, de Guinée et d'autres pays. « En tout cas, même pour des raisons différentes, ils ont tous vécu des parcours mi-



**ASSOCIATION.** Nicolas Vignard, Fanette Gilbert et Ségolène Girardet, membres de l'institut Don Bosco. PHOTO VF.

gratoires très compliqués », tient à ajouter Ségolène Girardet, chargée de mission au sein de la structure associative.

Après avoir répondu à un appel à projet en 2021, l'institut Don Bosco a lancé son opération de parrainage en ce début d'année 2022. Cofinancée par le Fonds Asile, Migration et Intégration de l'Union européenne, celle-ci a pour dessein premier de

favoriser l'inclusion de ces jeunes par le sport, l'art et la culture. « Aujourd'hui, outre les clichés qu'on leur attribue trop souvent, ils n'ont tous qu'une seule envie qui est celle de l'intégration », tient à faire part Ségolène Girardet.

N'importe quelle personne majeure, motivée et prête à s'engager sur le long terme peut ainsi devenir parrain ou marraine d'un de ces jeunes. L'im-

portant est qu'elle s'engage à partager un temps de sa vie déjà existant dans son quotidien, idéalement en lien avec la culture ou le sport. « On veut qu'ils intègrent les jeunes dans des activités qu'ils ont déjà l'habitude de faire », spécifie Nicolas Vignard.

### Un lien sur le long terme

Les fonds européens attribués au projet permettront de rembourser les activités pour le parrain et le jeune. En définitive, le second objectif de ce projet est qu'un lien puisse se tisser entre chaque binôme. « La possibilité que le lien perdure est une chose importante pour nous », explique le directeur de l'association. « L'idéal est que le parrain et le jeune aient des profils compatibles, les mêmes appétences. »

Ainsi, avant la création de chaque binôme des entretiens sont réalisés avec l'association afin que ce lien se tisse de la meilleure manière possible. « Ce projet de parrainage, c'est une première amorce dans l'intégration de ces jeunes dans la société », conclut Ségolène Girardet. ■

# EÑE - Improving integration processes through language training and learning



Accem



Co-funded by the European Union's Asylum, Migration and Integration Fund



# EÑE - Improving integration processes through language training and learning

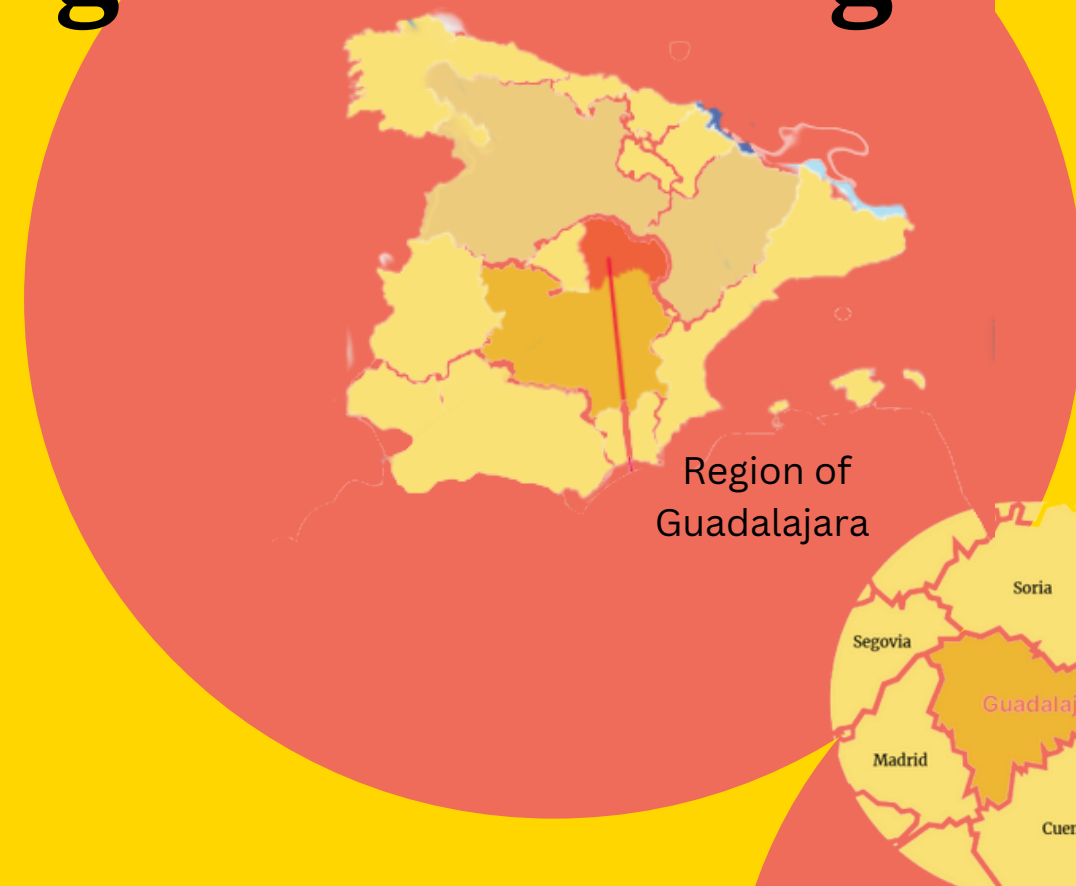
Where? Guadalajara, Spain

Topic: Language acquisition

Target Group: Migrants & refugees

## Activities:

- Weekly language courses in 3 rural towns
- Event “30 women, 30 stories”
- Event “15 books, 15 stories”
- Regular vocational courses





# EÑE - Improving integration processes through language training and learning

## Lessons Learned & Achievements

- Intercultural events improved mutual knowledge and intercultural sensitivity, leading to more informal meetings & stronger social links
- Regular language courses prevented isolation & improved integration, especially for women



# Integrating beyond Psicara

PSICARA  
PSICOLOGÍA



Co-funded by the European Union's  
Asylum, Migration and Integration Fund



# Integrating beyond

Where? Teruel, Spain

Topic: Emotional management & intercultural exchanges

Target Group: Migrants, refugees & local community (adults & kids)

- Activities:
- Workshops on emotional management & intercultural knowledge
  - “Gymkhana”
  - Outdoor awareness-raising activities
  - Language courses
  - IT courses



# Integrating beyond

Lessons  
Learned &  
Achievements

- Instead of following a fixed pattern, adapting the sessions to the needs & abilities of the participants led to a far better result in language learning
- The project has confirmed the importance of working on intercultural understanding & emotional management for both adults and children in rural areas



# Trails that unite

Red Cross Teruel



Co-funded by the European Union's  
Asylum, Migration and Integration Fund

# Trails that unite

Where? Teruel, Spain

Topic: Raise awareness of environmental protection

Target Group: Local communities & migrants (adults & kids)

- Activities:
- Awareness-raising activities in 12 schools
  - Environmental rehabilitation activities in community spaces
  - Reforestation and creation of green spaces in three rural municipalities
  - Cleaning activities
  - Photographic exhibitions



# Trails that unite

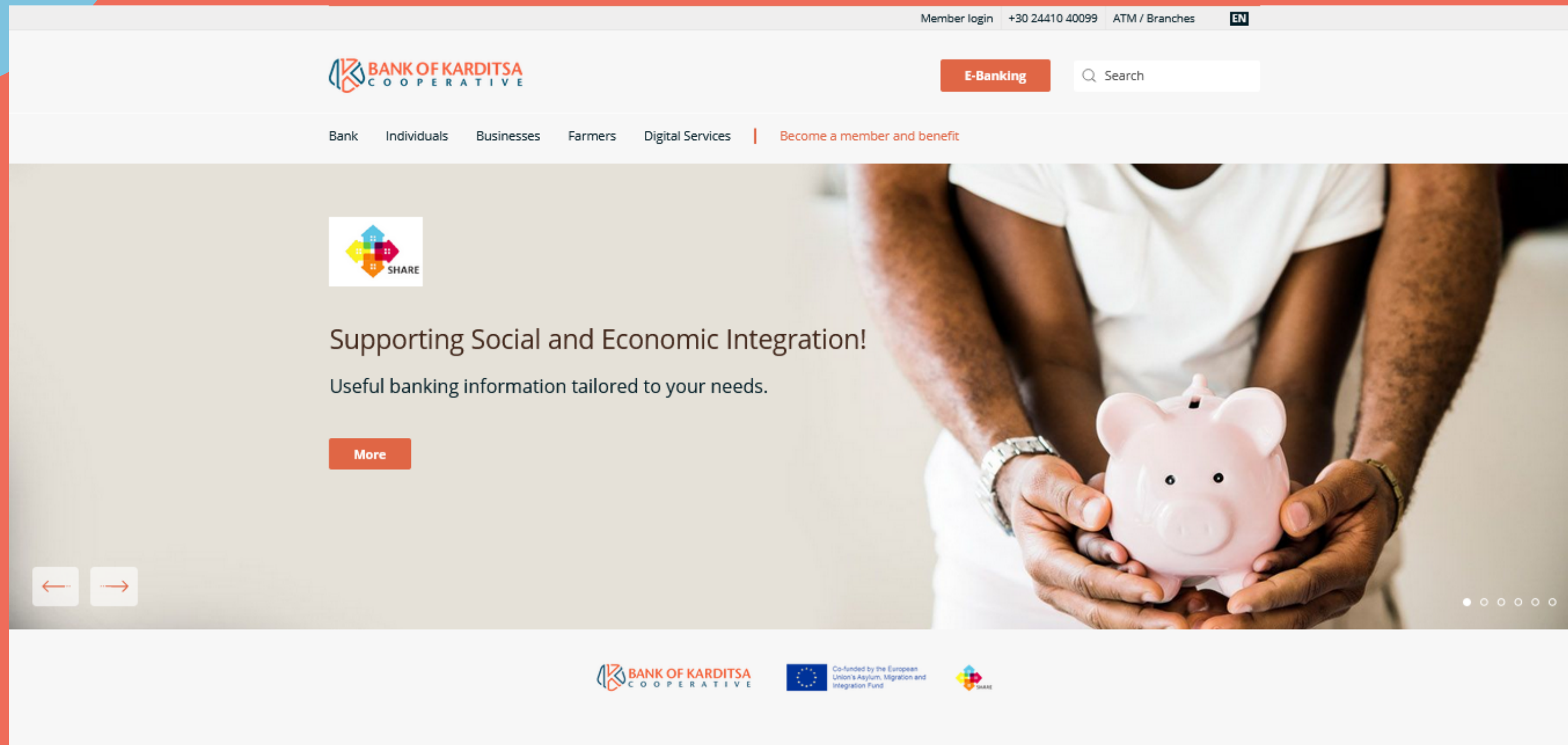
## Lessons Learned & Achievements

- Communicating and engaging with different stakeholders in rural areas is complex and requires a greater use of resources to obtain results
- Despite the challenges in rural areas, integration projects help to promote a feeling of belonging
- The concern for the environment has led to a bond of common interest between migrants and host community

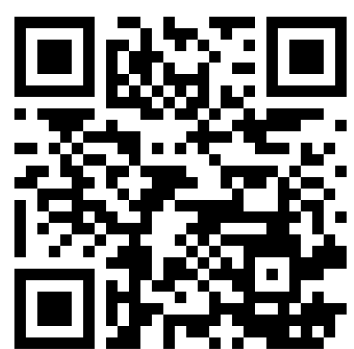


# Adaptation of a website, web banking and creation of information points to facilitate accessibility of refugees & migrants

## Karditsa Cooperative Bank



Co-funded by the European Union's  
Asylum, Migration and Integration Fund





# Adaptation of a website, web banking and creation of information points to facilitate accessibility of refugees & migrants



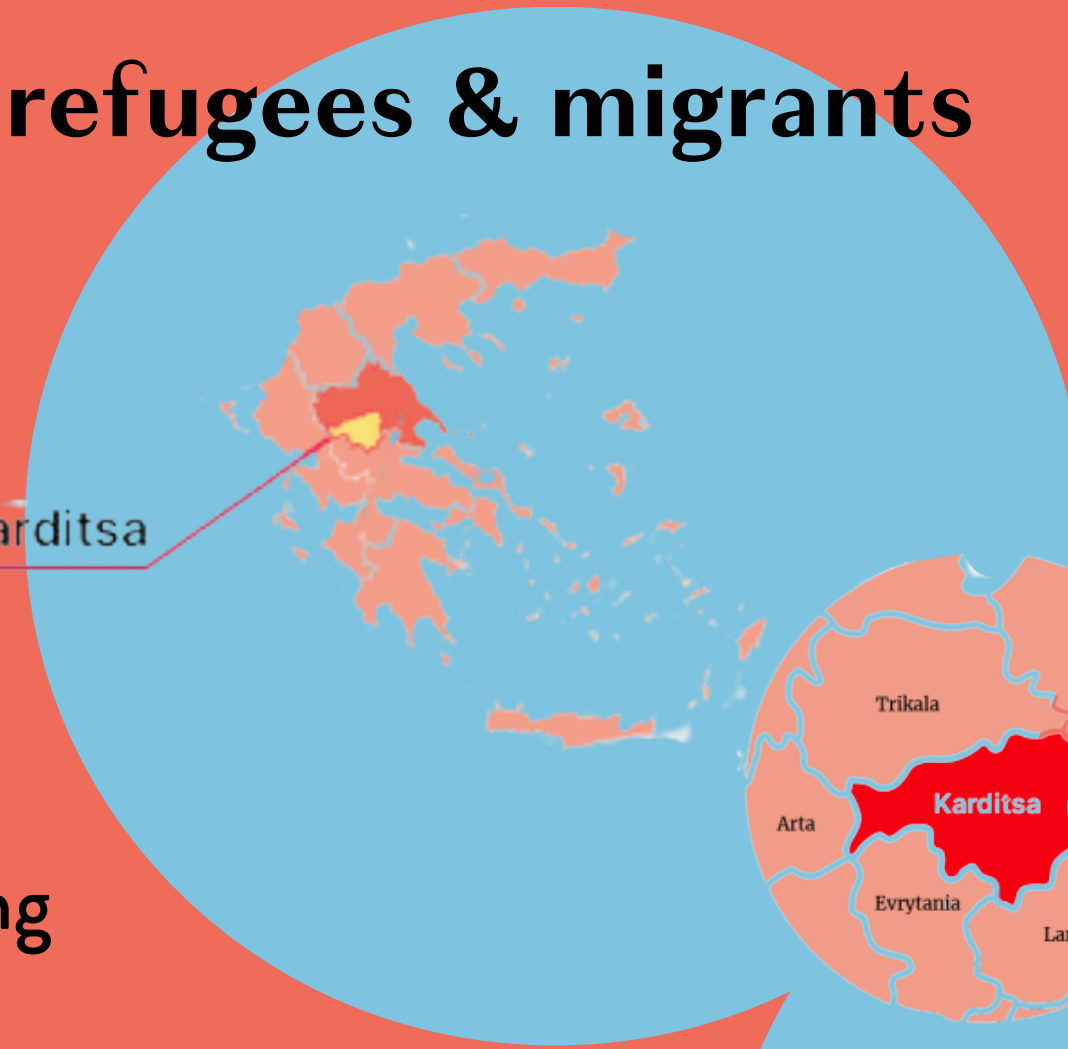
Where? Karditsa & Greece

Topic: Access to e-banking services

Target Group: Migrants and refugees

- Activities:
- Translation of the Bank's website and e-banking into French, English and Arabic
  - Creation & dissemination of QR code with relevant information
  - One-day event to inform the beneficiaries about their labour rights
  - "Career day" event with other local organizations and authorities

Karditsa



# Adaptation of a website, web banking and creation of information points to facilitate accessibility of refugees & migrants



## Lessons Learned & Achievements

- A preliminary needs' assessment provided good understanding of the needs of newcomers
- Building the intercultural management skills of staff in the banking sector is key
- Strengthening and expanding the network of partners was crucial for the completion of the action



# Piaseczno welcomes you!

EduNowa Foundation for Bilingualism



# Piaseczno welcomes you!

Where? Masovia, Poland

Topic: Socio-professional integration

Target Group: Migrant & refugee women, displaced women from Ukraine

- Activities:
- Polish and 'Polish society' courses
  - Access to mental & reproductive health support
  - Legal support & career counselling sessions
  - Awareness-raising workshops in local schools
  - Integration sessions with representatives of Piaseczno's women
  - Volunteer-run child care services
  - Orientation on job and housing offers
  - Trips, intercultural gatherings and information about events in the city

Province  
of Mazovia



# Piaseczno welcomes you!

## Lessons Learned & Achievements

- The pilot action was able to adapt its comprehensive approach to support displaced people from Ukraine
- It is essential to develop and recognise migrant women's abilities to be self-confident and independent
- The engagement of the local community was a key factor in fostering inclusion



# Welcome to Poland: integration of migrants and the local community in Lower Silesia!

Ukraine Foundation

FUNDACJA  
UKRAINA



Co-funded by the European Union's  
Asylum, Migration and Integration Fund

# Welcome to Poland: integration of migrants and the local community in Lower Silesia!

Where? Lower Silesia, Poland

Topic: Language acquisition & intercultural exchanges

Target Group: Migrant, refugees, displaced women from Ukraine

- Activities:
- Language clubs (or ‘Polish Speaking Clubs’)
  - Intercultural events (Integration club)
  - Artistic activities for kids
  - Labor fair
  - Theatre play performed by Ukrainians

Province of  
Lower Silesia



# Welcome to Poland: integration of migrants and the local community in Lower Silesia!

## Lessons Learned & Achievements

- People who took a Polish language course mastered the language at the communicative level
- A performance based on the real stories of migrants was included in the main repertoire of the Walbrzych Drama Theater
- Tons of humanitarian aid handed over to migrants in Walbrzych
- Integration of migrants into Polish society has accelerated qualitatively





# Share SIRA

Region of Bourgogne-Franche-Comté  
(Saône-et-Loire department)

Region of Nouvelle Aquitaine  
(Corrèze department)

Autonomous Region of Castilla y León  
(Soria province)

Autonomous Region of Castilla la Mancha  
(Guadalajara province)

Region of Provence-Alpes Côte d'Azur  
(Vaucluse department)

Autonomous Region of Aragón  
(Teruel province)

Region of Thessaly  
(Karditsa regional unit)

Province of Lower Silesia

Province of Mazovia

Region of Auvergne Rhône-Alpes  
(Isère department)

Logos and QR codes for: Institut DON BOSCO, HUMANITY, FUNDACJA UKRAINA, la ligue de l'enseignement F.O.L. de l'Isère, AU MAQUIS! Terrains d'éducation populaire, PSICARA PSICOLOGIA, Cruz Roja, and edu nowa laboratorium innowacji i rozwoju.



Co-funded by the European Union's  
Asylum, Migration and Integration Fund